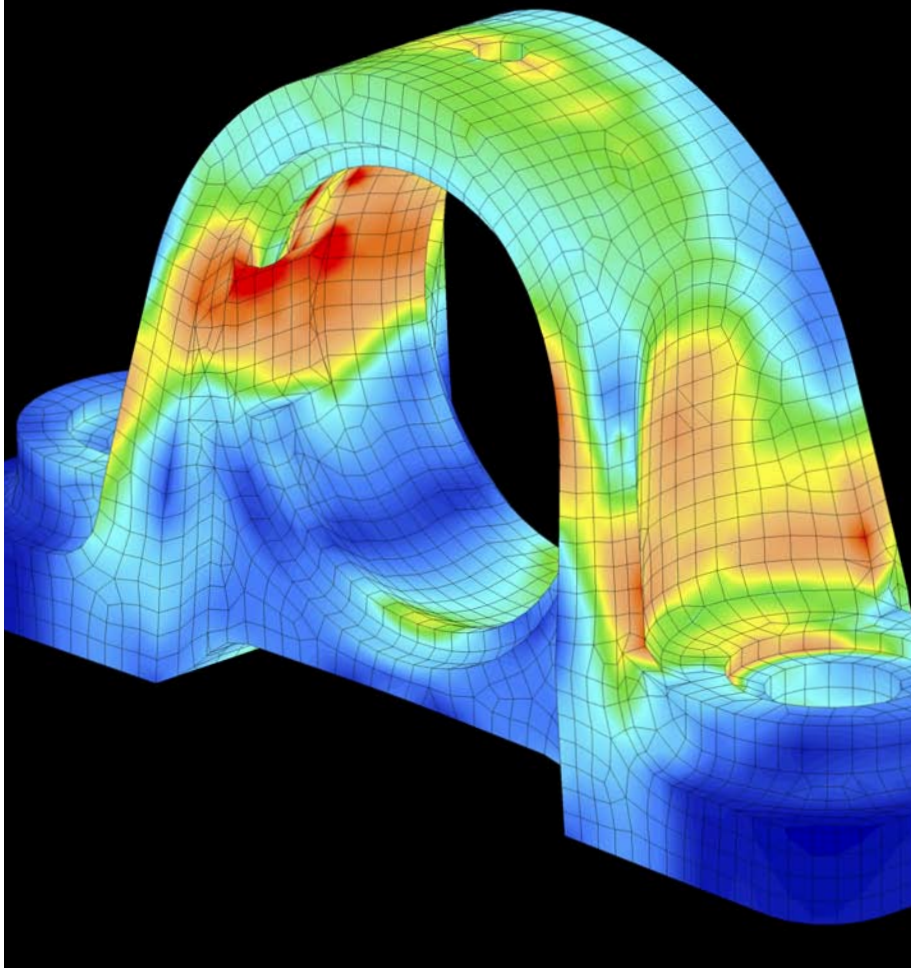
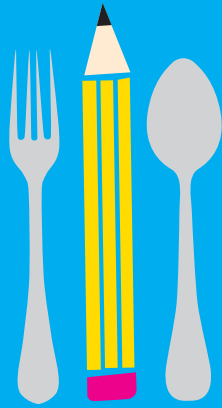


# Lunch & Learn

On April 19, join us for  
**PRODUCT DESIGN  
OPTIMIZATION WITH  
AUTODESK SIMULATION.**



## What if you were able to:

- Have confidence that you understood the real-world behavior of your product designs
- Optimize your products to be as cost-effective, lightweight, and efficient as possible
- Avoid quality issues or design changes that sometimes come up during manufacturing or once your product is in the field
- Adopt user-friendly and interoperable simulation tools that do not disrupt your workflow

The Autodesk Simulation product lines, part of the Autodesk Digital Prototyping portfolio, provide a range of analysis tools that enable designers and engineers to bring product performance knowledge into early stages of the design cycle—helping to improve collaboration, design better and safer products, save time and reduce manufacturing costs.

As an Autodesk Platinum Partner, Advanced Solutions invites you to tap our expertise to help you identify how to start applying simulation capabilities to your design work flow. This event will show how you can make critical engineering decisions earlier in the design process and avoid manufacturing problems while validating and optimizing your designs.

## AGENDA

- 11:30AM - 11:40AM Introductions, About Advanced Solutions
- 11:40AM - 12:00PM Overview of Autodesk Simulation products
- 12:00PM - 12:45PM What's New in Autodesk Simulation
- 12:45PM - 1:00PM Break & Networking
- 1:00PM - 1:35PM Autodesk Simulation Mechanical & Simulation Multiphysics  
Autodesk vs. Solidworks vs. ANSYS Simulation
- 1:35PM - 1:45PM Question & Answer, Closing Discussion

## LOCATION

Embassy Suites Cleveland-Beachwood  
3775 Park East Drive  
Beachwood, OH 44122

## PRESENTER

Bryan Fields, Application Engineer, Manufacturing Solutions

## REGISTRATION

[www.AdvancedSolutions.com/events](http://www.AdvancedSolutions.com/events)

***This is a free event, but space is limited. Reserve your spot today.***



**Autodesk®**  
Platinum Partner  
Architecture, Engineering & Construction  
Manufacturing  
Consulting Specialized  
Authorized Government Partner  
Authorized Training Center